

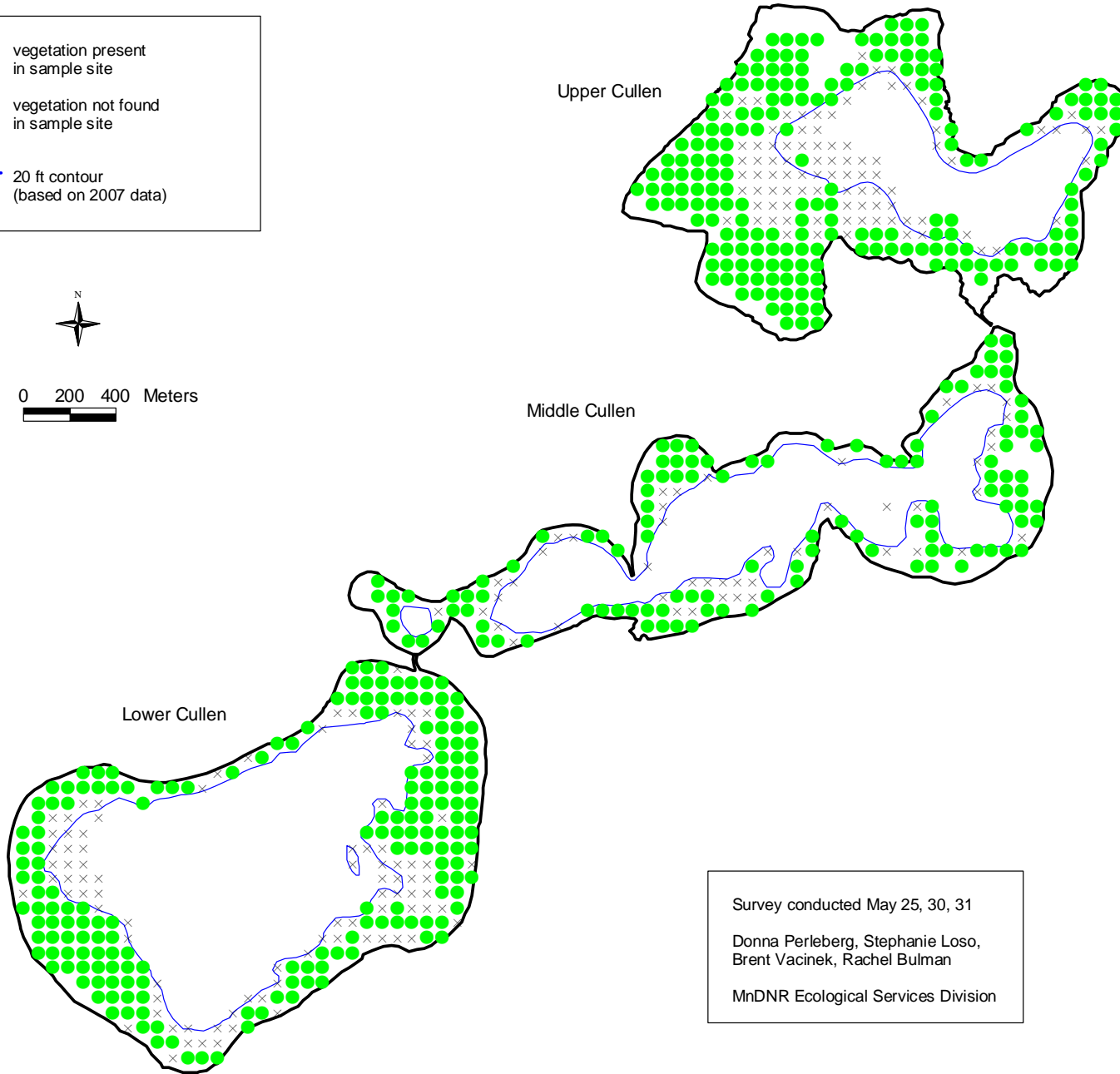
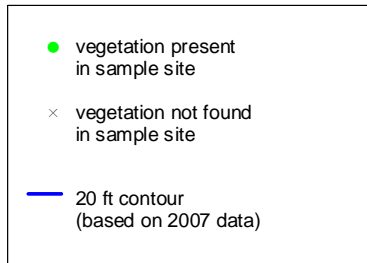
Preliminary results of spring vegetation survey of Upper, Middle and Lower Cullen Lakes (Crow Wing Co)

	Number of survey sites (shore to 20 ft depth)	Percent of sites with vegetation	Percent of sites where Curly-leaf pondweed occurred
Lower Cullen Lake	255	72%	16%
Middle Cullen Lake	163	71%	<1%
Upper Cullen Lake	287	69%	16%

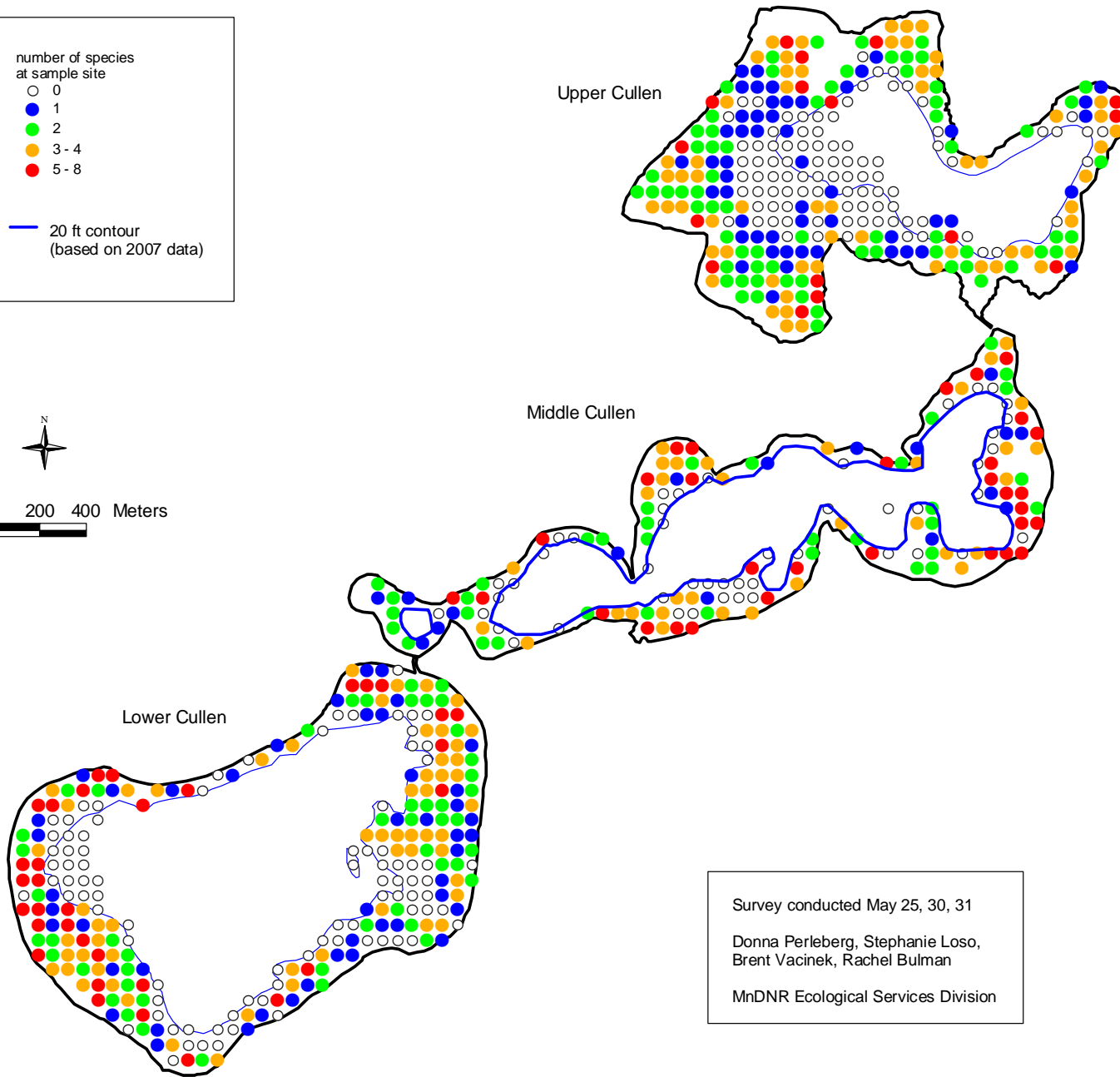
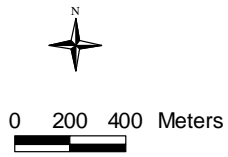
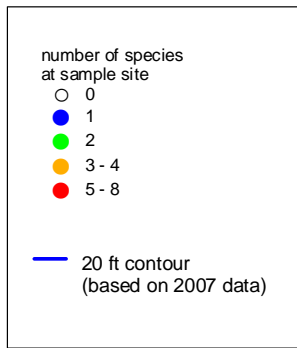
NOTE – native aquatic vegetation was not at peak growth during this survey. Sites that contained floating and/or emergent plant beds were avoided to prevent unnecessary damage to these plant beds. Additional plant species and additional areas of vegetation are likely present later in the summer. In addition, this survey was not intended to locate all areas of curly-leaf pondweed and data from these surveys are not intended to be used for aquatic plant management purposes (ie. These data are not intended to indicate potential areas for management activities). Curly-leaf pondweed varied in density among sites where it was observed and the mere presence of this plant does not indicate a need for management activities.

Donna Perleberg
MnDNR Ecological Services Division
Brainerd
218-833-8727

surveys conducted May 25,30,31 and June 4,5, 2007



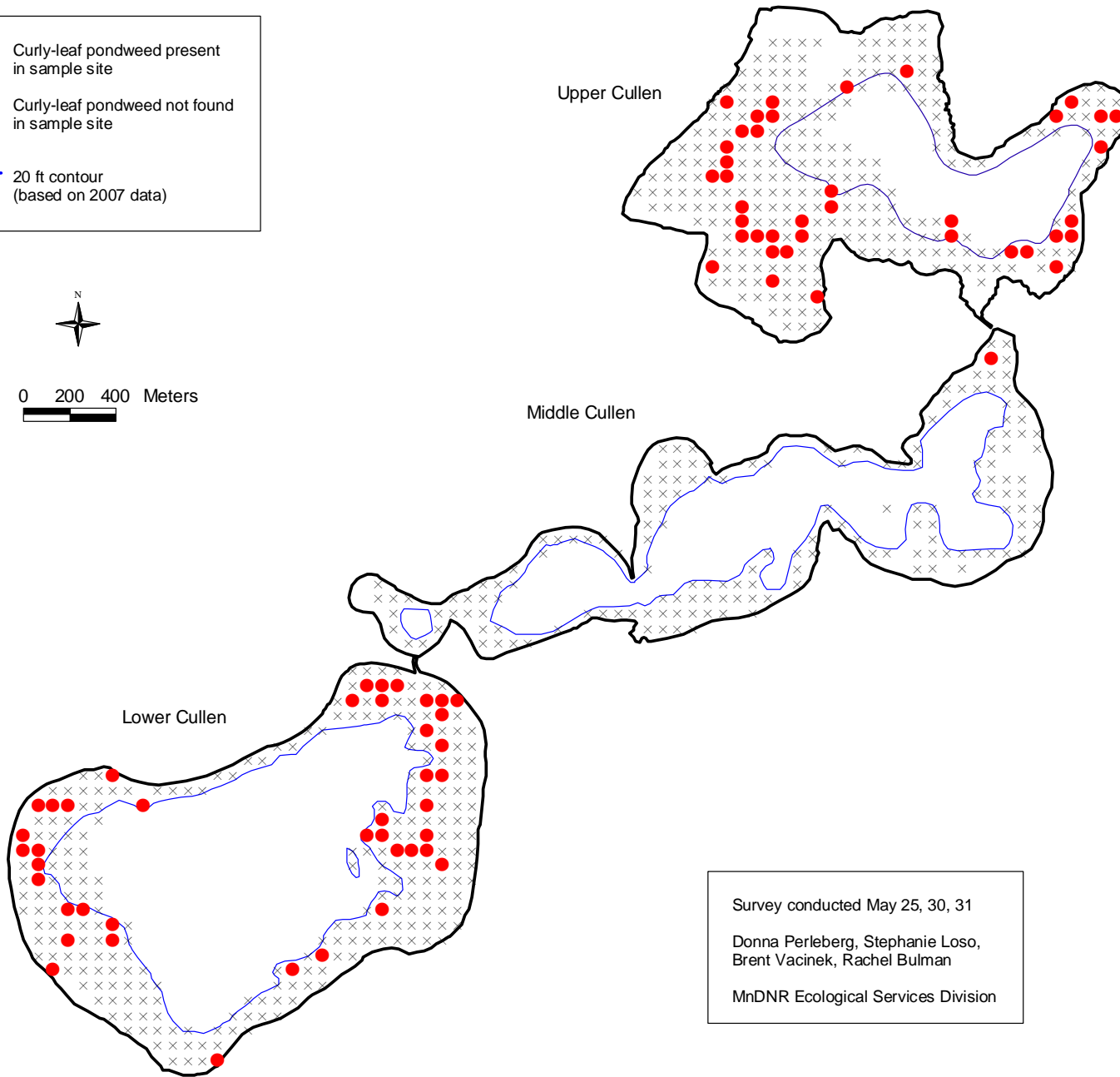
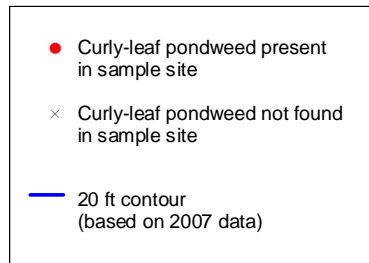
Survey conducted May 25, 30, 31
Donna Perleberg, Stephanie Loso,
Brent Vacinek, Rachel Bulman
MnDNR Ecological Services Division



Survey conducted May 25, 30, 31

Donna Perleberg, Stephanie Loso,
Brent Vacinek, Rachel Bulman

MnDNR Ecological Services Division



Survey conducted May 25, 30, 31
Donna Perleberg, Stephanie Loso,
Brent Vacinek, Rachel Bulman
MnDNR Ecological Services Division